

# ARIZONA ANTELOPE FOUNDATION

## San Rafael Valley Fence Modification

### June 7-9, 2024

**Project Location:** We will be completing a fence modification and fence rebuild project in the San Rafael Valley along county maintained roads to assist with unencumbered Pronghorn movement.

**Project Begins:** Friday, June 7th, leaving camp at 0800. Work will focus on rebuilding a ½ mile of old range fence and replacing with a new 4-strand wildlife friendly fence. Saturday, June 8th, the remaining fencelines will be modified, from 8-5. Meet at camp for all start times. This is a 2-day project, but we need the most volunteers on Friday and Saturday. If you can only work one day, Saturday would be the best for our work crew allocations.

**Project Activity:** We will be completing a fence rebuild on ½ mile stretch along with fence modification through removal and replacement of bottom strand on approximately 2.5 miles of existing range fence. Fence rebuild will be completed on Friday, with fence modification on Saturday.

**Pronghorn Benefits:** Fence modifications will be completed along county road rights-of-way where Pronghorn movement is limited and safety is compromised due to current fence bottom strand height. This project will enhance free pronghorn access in the northern portion of the San Rafael Valley..

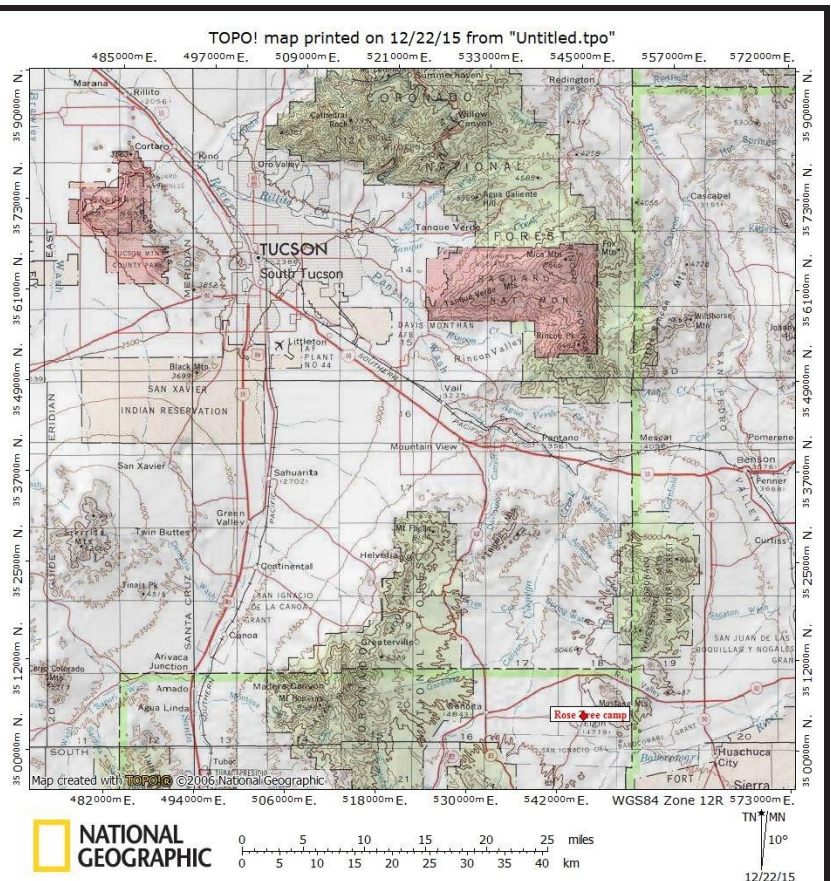
**What to Bring:** Work gloves (The AAF will have a limited supply), snacks, water, personal gear. It is recommended you bring a shade canopy as there are no trees at the campsite.

**Meals:** Please provide your own lunches to eat in the field on the 2 workdays. The AAF will provide dinner on Thursday, Friday, and Saturday nights, continental breakfast with coffee and juice on Friday, Saturday and Sunday.

**Contact:** Glen Dickens at 520-247-4907 or [info@azantelope.org](mailto:info@azantelope.org). Please RSVP by Friday May 31st to [info@azantelope.org](mailto:info@azantelope.org) or online at this Arizona Game and Fish link: [https://volunteer.azgfd.gov/need/detail/?need\\_id=939487](https://volunteer.azgfd.gov/need/detail/?need_id=939487) Let us know if you are attending so we can plan to have enough food and tools for everyone.

#### **Directions to Camp.**

- AAF project/camp site will be about 10 miles southeast of the intersection of Highways 83/82 at Sonoita.
- Travel 20 miles south of Tucson on I-10; turn south on Highway 83 and travel 25 miles to the town of Sonoita intersection.
- From this point turn east on Highway 82 and travel approximately 5 miles to the Upper Elgin paved road. Turn south again and follow AAF signs from that point.
- Camp will be located 3.4 miles south located on the east side of the roadway at the historic Rose Tree corrals and stone bunkhouse immediately adjacent to the roadway.





ARIZONA ANTELOPE FOUNDATION  
P. O. BOX 1191  
MESA, AZ 85211

NONPROFIT  
ORG.  
U.S. POSTAGE  
**PAID**  
Tucson, AZ  
PERMIT NO. 690

ADDRESS SERVICE REQUESTED

## **YOU ARE INVITED!**

### **UPCOMING 2024 ACTIVITIES**

**June 7-9<sup>th</sup> Vaca Ranch**

**August 10<sup>th</sup> I-17**

**September 21<sup>st</sup> 18A**

Visit our website for more information [www.azantelope.org](http://www.azantelope.org)